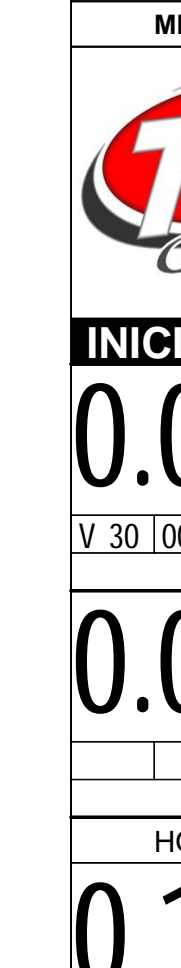


INICIO

MEDIA A
ENDURDASCACHOEIRAS2017
09 DE ABRIL DE 2017

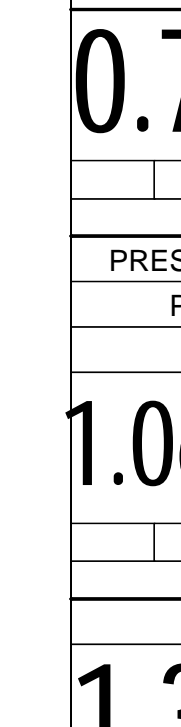


IMPORTANTE

☠ CUIDADO
☠☠ ATENÇÃO
☠☠☠ MUITA ATENÇÃO

Tempo de Prova

MEDIA 05:12:05



INICIO DE PROVA

0.00
V 30 | 00.00.00
T1

0.07
T1
HOTEL FLORIDA

0.12
T1

0.23
T1

0.36
T1

0.47
T1

0.58
T1
CAIXA ECONOMICA

0.62
T1
ZERENO POSTE
TRECHO DE AFERICAO

0.00
D 10' | 00.01.14
T2

0.47
T2

0.71
T2

1.065
T2
PRESENDO MADEIRAS
PLACA AFERE 1,065

1.37
T2
SUPER PAO

1.95
T2
PONTE DO ARCO

2.86
T3
ZERENO POSTE
JARDIM MUZZOLON

0.00
V 42 | 00.11.14
T3

0.82
T3

1.44
T3

1.49
D 3' | 00.13.22
T4
BEIRA MURETA

1.75
T4
SIGA PELO ACOSTAMENTO

1.85
T4

2.02
T4
POR BAIXO DO VIADUTO

2.24
T4
SAIDA DO VIADUTO

2.29
T4

2.56
T4
FRICESP

2.82
T4
SAINDO FRICESP

3.05
T4

3.38
V 45 | 00.16.22
T5

4.61
T6
FIM CALCAMENTO

0.00
V 45 | 00.18.01
T6

0.20
T6

1.33
T6

1.46
T6

1.51
V 21 | 00.20.01
T7
NO PINUS

1.57
T7

1.60
T7

1.64
V 37 | 00.20.24
T8

1.69
T8

1.76
T8

1.84
T8

1.94
T8

2.13
T8
XXXX XXXX

2.35
T8
☠☠

2.64
V 35 | 00.22.01
T9
CUIDADO MOTOS

2.90
T9

3.31
V 20 | 00.23.10
T10
LISO PEDRAS

3.58
V 35 | 00.23.58
T11

3.82
T11

4.24
T11

4.62
V 18 | 00.25.45
T12
NO MATO

4.85
T12

4.91
V 37 | 00.26.43
T13
☠☠

5.19
T13

5.45
V 21 | 00.27.36
T14

5.58
T14
XXXX XXXX

5.86
V 18 | 00.28.46
T15

6.11
T15
NEUTRO

0.00
N 4' | 00.29.36
T16

0.00
V 39 | 00.33.36
T17

0.66
V 12 | 00.34.37
T18
☠☠

1.28
V 30 | 00.37.43
T19
TRILHA DO PROFESSOR

1.51
T19

1.69
T19

1.80
T19

1.97
T19

2.16
T19

2.21
☠☠ T19

2.38
T19

2.41
V 20 | 00.39.59
T20
DESCIDA LISO

2.42
T20

2.63
V 28 | 00.40.38
T21
☠☠

2.97
T21
GASSS

3.07
T21
☠☠

3.22
V 20 | 00.41.54
T22

3.27
T22

3.32
T22
DESCE

3.42
V 28 | 00.42.30
T23
☠☠

3.56
T23

3.59
T23

3.72
T23

3.77
T23

3.95
T23

4.20
V 34 | 00.44.10
T24
☠☠

4.32
T24

4.36
T24

4.52
T24

4.76
T24
XXXX XXXX

4.82
V 21 | 00.45.16
T25

5.04
V 36 | 00.45.54
T26
☠☠

5.22
V 21 | 00.46.12
T27
SIGA BAND

5.32
V 42 | 00.46.29
T28

5.39
T28

5.42
T28

5.67
T28

6.04
☠☠ T28

6.18	T28	192
6.60	T28	193
6.68	T28	194
6.73	T28	195
6.79	T28	196
6.81	T28	197
7.01	T28	198
7.21	T28	199
7.57	T29	100
7.59	T29	101
7.62	T29	102
7.65	T29	103
7.72	T30	104
7.72	T31	105
7.87	T31	106
8.20	T31	107
8.28	T31	108
8.39	T31	109
8.45	T31	110
8.47	T31	111
8.67	T31	112
8.89	T31	113
9.45	T32	114
0.00	T33	115
0.39	T33	116
0.50	T34	117
0.67	T34	118
0.74	T34	119
0.86	T34	120
0.97	T34	121
1.14	T34	122
1.36	T34	123
1.47	T34	124
1.59	T34	125
1.71	T35	126
2.00	T35	127
2.14	T35	128
2.32	T36	129
2.45	T37	130
2.45	T38	131
3.41	T38	132
3.64	T38	133
3.74	T38	134
4.16	T38	135
4.50	T39	136
4.56	T39	137
4.81	T39	138
4.86	T39	139
4.93	T39	140
5.08	T39	141
5.14	T40	142
0.00	T41	143
1.95	T42	144
1.95	T43	145
2.83	T43	146
3.38	T44	147
0.10	T44	148
0.16	T44	149
0.82	T45	150
0.96	T45	151
1.07	T45	152
1.14	T45	153
1.38	T45	154
1.53	T45	155
1.64	T45	156
1.82	T45	157
1.88	T45	158
1.97	T46	159
2.69	T46	160
2.83	T46	161
3.18	T47	162
3.20	T48	163
3.43	T48	164
3.50	T48	165
3.60	T48	166
3.65	T48	167
3.74	T48	168
4.20	T48	169
4.95	T48	170
5.27	T48	171
5.35	T48	172
5.38	T49	173
0.00	T50	174
0.23	T50	175
0.46	T50	176
1.02	T50	177
1.23	T51	178
1.31	T51	179
1.34	T51	180
1.39	T51	181
1.44	T51	182
1.47	T51	183
1.50	T51	184
1.55	T51	185
1.63	T52	186
1.63	T53	187

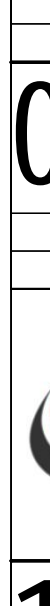
GA SSS		1.73	
	T53	188	
T53		2.09	
	T53	189	
T53		2.13	
	T53	190	
T53		2.39	
	T53	191	
T53		2.58	
	T53	192	
T53		2.98	
	T53	193	
T53		3.15	
	T53	194	
T53		3.35	
	T53	195	
T53		3.40	
	T53	196	
T53		3.72	
	T53	197	
PAL		4.10	
	T53	198	
T53		4.45	
	T53	199	
T54		4.60	
V 45	01.50.08	200	
T54		0.14	
	T54	201	
T54		0.56	
	T54	202	
TRILHA DO KE TREKE		1.11	
V 39	01.51.37	203	
T55		1.15	
	T55	204	
T55		1.20	
	T55	205	
T55		1.59	
	T55	206	
T56		1.66	
V 28	01.52.27	207	
T56		1.75	
	T56	208	
T56		1.85	
	T56	209	
T56		1.90	
	T56	210	
T56		1.98	
	T56	211	
T56		2.19	
	T56	212	
T57		2.28	
V 30	01.53.47	213	
T57		2.70	
	T57	214	
DESCIDA FORTE		2.95	
	T57	215	
T57		3.01	
	T57	216	
T57		3.10	
	T57	217	
T57		3.23	
	T57	218	
T57		3.25	
	T57	219	
DESCIDA FORTE		3.30	
	T57	220	
T57		3.68	
	T57	221	
T57		3.71	
	T57	222	
PROPRIEDADE BRUNS		3.79	
N 4'	01.56.48	223	
T59		3.79	
V 45	02.00.48	224	
T59		4.85	
	T59	225	
T59		6.26	
	T59	226	
T59		6.38	
	T59	227	
PROPRIEDADE GIBINSKI		7.02	
	T59	228	
T60		7.48	
V 24	02.05.43	229	
T60		7.66	
	T60	230	
T60		7.79	
	T60	231	
LAVOURA		8.34	
	T61	232	
V 45	02.07.52	232	
T61		0.54	
	T61	233	
T61		0.59	
	T61	234	
T61		0.99	
	T61	235	
CUIDADO PAL		1.28	
	T61	236	
T62		2.35	
V 30	02.11.00	237	
T62		3.28	
	T62	238	
ENTRE N MATO		3.51	
	T62	239	
T63		3.68	
V 45	02.13.40	240	
T63		3.80	
	T63	241	
T63		4.16	
	T63	242	
T63		4.22	
	T63	243	
T63		4.48	
	T63	244	
T63		4.51	
	T63	245	
T63		4.58	
	T63	246	
T63		5.22	
	T63	247	
T63		5.28	
	T63	248	
T63		5.57	
	T63	249	
T63		5.66	
	T63	250	
SO PARA MASTER		5.76	
	T64	251	
N 3'	02.16.26	251	
T64		0.00	
V 40	02.19.26	252	
T65		1.14	
	T65	253	
T65		1.25	
	T65	254	
T65		1.32	
	T65	255	
T66		1.86	
V 28	02.22.14	256	
T66		1.94	
	T66	257	
T66		1.96	
	T66	258	
T66		2.00	
	T66	259	
T66		2.48	
	T66	260	
GA SSS		2.73	
	T66	261	
T66		2.90	
	T66	262	
T66		2.95	
	T66	263	
T66		3.11	
	T66	264	
T66		3.15	
	T66	265	
PAL		3.17	
N 2'	02.25.02	266	
T67		3.17	
V 40	02.27.02	267	
T68		3.24	
	T68	268	
T68		3.42	
	T68	269	
T68		3.66	
	T68	270	
T68		3.88	
	T68	271	
ABELHAS		3.97	
V 33	02.28.14	272	
T69		4.00	
	T69	273	
T69		4.40	
	T69	274	
T70		4.47	
V 43	02.29.09	275	
T70		4.75	
	T70	276	
T70		4.87	
	T70	277	
T70		5.13	
	T70	278	
T70		5.31	
	T70	279	
T71		5.50	
V 32	02.30.35	280	
T72		5.90	
V 36	02.31.20	281	
T72		6.68	
	T72	282	
T72		6.87	
	T72	283	
T72		7.08	
	T72	284	

7.28					285	
7.47	V 25	02.33.57	T73		286	
7.51			T73	SUBA	287	
7.60			T73	GASSS	288	
7.80	N 3'	02.34.45	T74		289	
7.80	V 39	02.37.45	T75		290	
8.20	V 15	02.38.21	T76	CDD MORTAL BARRANCO	291	
8.24			T76	DES VIE	292	
8.27			T76		293	
8.37	V 30	02.39.02	T77		294	
8.72			T77		295	
9.02						
0.00	V 40	02.40.20	T78		296	
0.10			T78		297	
0.22			T78		298	
0.27			T78		299	
1.27			T78		300	
1.76			T78		301	
2.39			T78	CDD PAL CARROS	302	
2.44	V 40	02.44.00	T79		303	
3.11			T79	MSC	304	
4.89			T79	CDD MOTOS	305	
6.06			T79	NEUTRO PRINCIPAL	306	
6.72	N 30'	02.50.25	T80	ZERE NO PONTO DE ONIBUS	307	
0.00	V 39	03.20.25	T81		308	
0.17			T81		309	
0.48			T81		310	
0.77			T81	CUIDADO CERCA	311	
1.00	V 15	03.21.57	T82		312	
1.03	V 41	03.22.05	T83		313	
1.25			T83		314	
2.37			T83		315	
2.38			T83		316	
2.57			T83		317	
3.70			T83		318	
4.41	V 33	03.27.01	T84		319	
4.51			T84		320	
4.72			T84	CUIDADO PONTE	321	
4.78			T84		322	
5.08			T84	SUBA GASSS	323	
5.38	V 29	03.28.47	T85		324	
5.65			T85		325	
6.08			T85	SUBA GASS	326	
6.23			T85	LAJE PEDRA	327	
6.42			T85	NEUTRO	328	
6.50	N 3'	03.31.06	T86		329	
0.00	V 42	03.34.06	T87		330	
0.23			T87		331	
0.96	V 48	03.35.28	T88		332	
1.15			T88		333	
1.23			T88		334	
1.32			T88		335	
1.70			T88		336	
2.39			T88		337	
2.47			T88		338	
2.89			T88		339	
3.26			T88		340	
3.49			T88		341	
3.83			T88	PEDRAS	342	
4.87			T88		343	
5.26			T88		344	
6.19			T88	PPAL	345	
6.30			T88		346	
6.51			T88		347	
6.91			T88	LAGO	348	
7.44			T88		349	
7.61	V 33	03.43.47	T89		350	
7.90			T89	NEUTRO	351	
8.05	N 3'	03.44.35	T90		352	
0.00	V 45	03.47.35	T91		353	
0.19			T91		354	
0.49			T91		355	
0.83			T91		356	
0.94			T91		357	
1.44			T91		358	
1.50			T91		359	
2.06			T91		360	
2.18			T91		361	
2.27			T91		362	
2.29			T91		363	
2.44			T91		364	
2.70			T91		365	
2.80			T91		366	
2.84			T91		367	
2.89			T91		368	
2.94			T91		369	
3.27			T91	DESCELISOOO	370	
3.69			T91	CDD LISO	371	
3.84			T91		372	
3.90			T91	CUIDADO BR	373	
4.20	N 2'	03.53.11	T92		374	
4.20	D 4'	03.55.11	T93		375	
5.71			T93	NEUTRO ABASTECIMENTO	376	
6.20	N 10'	03.59.11	T94		377	
0.00	V 25	04.09.11	T95		378	
0.17			T95		379	

	NO PUNUS	
0.41		
	T95	380
0.50		
	T95	381
0.51	NO MATO	
	T95	382
0.56		
	T95	383
0.58		
	T96	384
0.71		
	T96	385
1.18		
	T96	386
1.22	CDD PAL	
	T97	387
2.03		
	T98	388
2.28	LAGO	
	T98	389
2.31	CUIDADO PONTE	
	T99	390
3.21		
	T100	391
3.31		
	T100	392
3.67		
	T100	393
4.02		
	T100	394
4.21	CDD PAL	
	T100	395
4.25		
	T101	396
4.25		
	T102	397
4.54		
	T102	398
4.58		
	T102	399
4.84		
	T102	400
5.26		
	T103	401
5.51		
	T104	402
5.53		
	T104	403
5.59		
	T105	404
5.77	VALA CUIDADO	
	T105	405
5.83		
	T105	406
5.87		
	T106	407
6.69	PEDRAS	
	T107	408
6.72	VALA	
	T107	409
6.76	LISOO	
	T107	410
6.85		
	T108	411
7.04		
	T108	412
7.32	NEUTRO	
0.00		
	T109	413
0.00		
	T110	414
0.55		
	T110	415
0.64		
	T110	416
0.74		
	T110	417
1.13		
	T110	418
1.75	CONEXAO	
	T111	419
1.79	GASSS	
	T111	420
1.90		
	T111	421
2.57		
	T111	422
2.63		
	T111	423
2.93		
	T111	424
3.14		
	T111	425
3.35		
	T112	426
4.69		
	T112	427
5.29		
	T113	428
5.29		
	T114	429
5.56		
	T114	430
5.58		
	T114	431
5.70		
	T114	432
5.97		
	T114	433
6.09		
	T114	434
6.12		
	T114	435
7.98		
	T114	436
8.20		
	T115	437
0.00		
	T115	438
0.81		
	T115	439
1.01		
	T115	440
1.20		
	T115	441
1.50		
	T115	442
1.66		
	T115	443
1.73		
	T115	444
1.76		
	T115	445
1.94		
	T115	446
2.25		
	T115	447
2.54		
	T116	448
2.66		
	T116	449
2.72		
	T117	450
2.77	MANGUEIRA	
	T117	451
2.79	CDD CHIFRE	
	T118	452
2.79		
	T119	453
2.83		
	T119	454
3.01		
	T119	455
3.08	DESCIDA FORTE	
	T120	456
3.63	COM PEDRAS	
	T121	457
3.97		
	T122	458
4.06		
	T122	459
4.15		
	T122	460
4.66		
	T123	461
4.99		
	T123	462
5.25		
	T124	463
5.33		
	T124	464
5.50		
	T124	465
5.99	LISOO	
	T125	466
6.09		
	T126	467
6.16	EROSÕES	
	T126	468
6.53		
	T126	469
6.64		
	T127	470
0.00		
	T128	471
0.15		
	T128	472
2.23		
	T128	473
3.31		
	T128	474
3.86	LOMBADA	
	T128	475
4.01	INICIA SFALTO	
	T129	476
0.00	VIADUTO	
	T130	477
0.08	POR BAIXO	
	T130	477

0.21

T130



0.38

T130



1.05

T130



PONTO DE ONIBUS

1.34

T130



2.22

T130



PARE

2.61

T130



SENTIDO BR 153

3.77

T130



PARE BR

3.82

T130



3.89

T130



RADAR

4.04

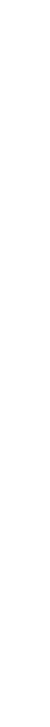
T130



LOMBADA

5.56

T130



5.62

T130



5.68

T130



FIMATE 2018

AMERICAN GRILL

5.84

T131



N 1s 05.12.05

FIM DE PROVA !!



www.t15.com.br

Tempo de Prova

MEDIA A 05:12:05

FIM