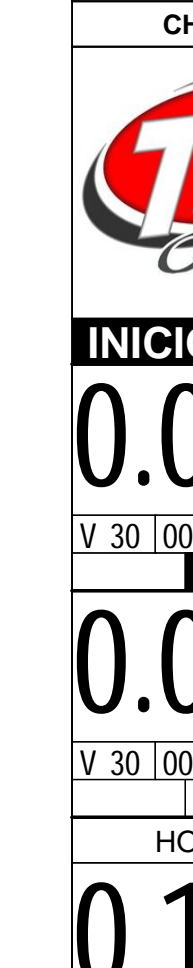


# INICIO

CHUVA  
ENDURDASCAHOEIRAS2017  
09 DE ABRIL DE 2017

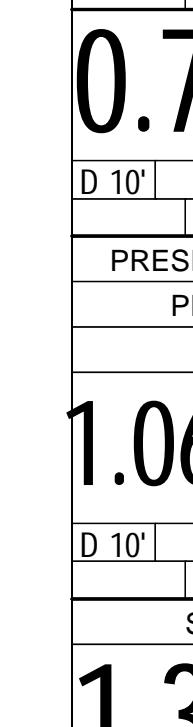


## IMPORTANTE

☠☠ CUIDADO  
☠☠☠ ATENÇÃO  
☠☠☠☠ MUITA ATENÇÃO

### Tempo de Prova

CHUVA 05:39:17



### INICIO DE PROVA

0.00  
V 30 00.00.00  
T1

0.07  
V 30 00.00.08  
T1

0.12  
V 30 00.00.14  
T1

0.23  
V 30 00.00.28  
T1

0.36  
V 30 00.00.43  
T1

0.47  
V 30 00.00.56  
T1

0.58  
V 30 00.01.10  
T1

0.62  
D 10' 00.01.14  
T2

0.47  
D 10' 00.01.14  
T2

0.71  
D 10' 00.01.14  
T2

1.065  
D 10' 00.01.14  
AFER

1.37  
D 10' 00.01.14  
T2

1.95  
D 10' 00.01.14  
T2

2.86  
V 40 00.11.14  
T3

0.82  
V 40 00.12.28  
T3

1.44  
V 40 00.13.24  
T3

1.49  
D 3' 00.13.28  
T4

1.75  
D 3' 00.13.28  
T4

1.85  
D 3' 00.13.28  
T4

2.02  
D 3' 00.13.28  
T4

2.24  
D 3' 00.13.28  
T4

2.29  
D 3' 00.13.28  
T4

2.56  
D 3' 00.13.28  
T4

2.82  
D 3' 00.13.28  
T4

3.05  
D 3' 00.13.28  
T4

3.38  
V 40 00.16.28  
T5

4.61  
V 40 00.18.19  
T6

0.20  
V 40 00.18.37  
T6

1.33  
V 40 00.20.19  
T6

1.46  
V 40 00.20.31  
T6

1.51  
V 15 00.20.35  
T7

1.57  
V 15 00.20.50  
T7

1.60  
V 15 00.20.57  
T7

1.64  
V 30 00.21.06  
T8

1.69  
V 30 00.21.12  
T8

1.76  
V 30 00.21.21  
T8

1.84  
V 30 00.21.30  
T8

1.94  
V 30 00.21.42  
T8

2.13  
V 30 00.22.05  
T8

2.35  
V 30 00.22.32  
T8

2.64  
V 27 00.23.06  
T9

2.90  
V 27 00.23.41  
T9

3.31  
V 14 00.24.36  
T10

3.58  
V 27 00.25.45  
T11

3.82  
V 27 00.26.17  
T11

4.24  
V 27 00.27.13  
T11

4.62  
V 12 00.28.04  
T12

4.85  
V 12 00.29.13  
T12

4.91  
V 30 00.29.31  
T13

5.19  
V 30 00.30.04  
T13

5.45  
V 13 00.30.36  
T14

5.58  
V 13 00.31.12  
T14

5.86  
V 12 00.32.29  
T15

6.11  
N 4' 00.33.44  
T16

0.00  
V 30 00.37.44  
T17

0.66  
V 8 00.39.03  
T18

1.28  
V 21 00.43.42  
T19

1.51  
V 21 00.44.22  
T19

1.69  
V 21 00.44.53  
T19

1.80  
V 21 00.45.11  
T19

1.97  
V 21 00.45.41  
T19

2.16  
V 21 00.46.13  
T19

2.21  
V 21 00.46.22  
T19

2.38  
V 21 00.46.51  
T19

2.41  
V 12 00.46.56  
T20

2.42  
V 12 00.46.59  
T20

2.63  
V 20 00.48.02  
T21

2.97  
V 20 00.49.03  
T21

3.07  
V 20 00.49.21  
T21

3.22  
V 12 00.49.48  
T22

3.27  
V 12 00.50.03  
T22

3.32  
V 12 00.50.18  
T22

3.42  
V 20 00.50.48  
T23

3.56  
V 20 00.51.13  
T23

3.59  
V 20 00.51.19  
T23

3.72  
V 20 00.51.42  
T23

3.77  
V 20 00.51.51  
T23

3.95  
V 20 00.52.24  
T23

4.20  
V 27 00.53.09  
T24

4.32  
V 27 00.53.25  
T24

4.36  
V 27 00.53.30  
T24

4.52  
V 27 00.53.51  
T24

4.76  
V 27 00.54.23  
T24

4.82  
V 12 00.54.31  
T25

5.04  
V 27 00.55.37  
T26

5.22  
V 12 00.56.01  
T27

5.32  
V 30 00.56.31  
T28

5.39  
V 30 00.56.40  
T28

5.42  
V 30 00.56.43  
T28

5.67  
V 30 00.57.13  
T28

6.04  
V 30 00.57.58  
T28

6.18	V 30 00.58.14	T28	192	
6.60	V 30 00.59.05	T28	193	
6.68	V 30 00.59.14	T28	194	
6.73	V 30 00.59.20	T28	195	
6.79	V 30 00.59.28	T28	196	
6.81	V 30 00.59.30	T28	197	
7.01	V 30 00.59.54	T28	198	
7.21	V 30 01.00.18	T28	199	
7.57	V 10 01.01.01	T29	100	
7.59	V 10 01.01.08	T29	101	
7.62	V 10 01.01.19	T29	102	
7.65	V 10 01.01.30	T29	103	
7.72	N 2' 01.01.55	T30	104	
7.72	V 30 01.03.55	T31	105	
7.87	V 30 01.04.13	T31	106	
8.20	V 30 01.04.53	T31	107	
8.28	V 30 01.05.02	T31	108	
8.39	V 30 01.05.16	T31	109	
8.45	V 30 01.05.23	T31	110	
8.47	V 30 01.05.25	T31	111	
8.67	V 30 01.05.49	T31	112	
8.89	V 30 01.06.16	T31	113	
9.45	N 4' 01.07.23	T32	114	
0.00	V 33 01.11.23	T33	115	
0.39	V 33 01.12.05	T33	116	
0.50	V 18 01.12.17	T34	117	
0.67	V 18 01.12.51	T34	118	
0.74	V 18 01.13.05	T34	119	
0.86	V 18 01.13.29	T34	120	
0.97	V 18 01.13.51	T34	121	
1.14	V 18 01.14.25	T34	122	
1.36	V 18 01.15.09	T34	123	
1.47	V 18 01.15.31	T34	124	
1.59	V 18 01.15.55	T34	125	
1.71	V 30 01.16.19	T35	126	
2.00	V 30 01.16.54	T35	127	
2.14	V 30 01.17.11	T35	128	
2.32	V 18 01.17.33	T36	129	
2.45	N 2' 01.17.59	T37	130	
2.45	V 34 01.19.59	T38	131	
3.41	V 34 01.21.40	T38	132	
3.64	V 34 01.22.05	T38	133	
3.74	V 34 01.22.15	T38	134	
4.16	V 34 01.23.00	T38	135	
4.50	V 20 01.23.36	T39	136	
4.56	V 20 01.23.46	T39	137	
4.81	V 20 01.24.31	T39	138	
4.86	V 20 01.24.40	T39	139	
4.93	V 20 01.24.53	T39	140	
5.08	V 20 01.25.20	T39	141	
5.14	N 2' 01.25.31	T40	142	
0.00	D 4' 01.27.31	T41	143	
1.95	N 10' 01.31.31	T42	144	
1.95	V 40 01.41.31	T43	145	
2.83	V 40 01.42.50	T43	146	
3.38	V 40 01.43.40	T44	147	
0.10	V 40 01.43.48	T44	148	
0.16	V 40 01.43.54	T44	149	
0.82	V 39 01.44.53	T45	150	
0.96	V 39 01.45.06	T45	151	
1.07	V 39 01.45.16	T45	152	
1.14	V 39 01.45.23	T45	153	
1.38	V 39 01.45.45	T45	154	
1.53	V 39 01.45.59	T45	155	
1.64	V 39 01.46.09	T45	156	
1.82	V 39 01.46.26	T45	157	
1.88	V 39 01.46.31	T45	158	
1.97	V 28 01.46.39	T46	159	
2.69	V 28 01.48.12	T46	160	
2.83	V 28 01.48.30	T46	161	
3.18	V 10 01.49.15	T47	162	
3.20	V 22 01.49.22	T48	163	
3.43	V 22 01.50.00	T48	164	
3.50	V 22 01.50.11	T48	165	
3.60	V 22 01.50.28	T48	166	
3.65	V 22 01.50.36	T48	167	
3.74	V 22 01.50.51	T48	168	
4.20	V 22 01.52.06	T48	169	
4.95	V 22 01.54.09	T48	170	
5.27	V 22 01.55.01	T48	171	
5.35	V 22 01.55.14	T48	172	
5.38	N 5' 01.55.19	T49	173	
0.00	V 36 02.00.19	T50	174	
0.23	V 36 02.00.42	T50	175	
0.46	V 36 02.01.05	T50	176	
1.02	V 36 02.02.01	T50	177	
1.23	V 18 02.02.22	T51	178	
1.31	V 18 02.02.38	T51	179	
1.34	V 18 02.02.44	T51	180	
1.39	V 18 02.02.54	T51	181	
1.44	V 18 02.03.04	T51	182	
1.47	V 18 02.03.20	T51	183	
1.50	V 18 02.03.16	T51	184	
1.55	V 18 02.03.26	T51	185	
1.63	N 2' 02.03.42	T52	186	
1.63	V 36 02.05.42	T53	187	



GASS	
1.73	
V 36 02.05.52	
T53	188
2.09	
V 36 02.06.28	
T53	189
2.13	
V 36 02.06.32	
T53	190
2.39	
V 36 02.06.58	
T53	191
2.58	
V 36 02.07.17	
T53	192
2.98	
V 36 02.07.57	
T53	193
3.15	
V 36 02.08.14	
T53	194
3.35	
V 36 02.08.34	
T53	195
3.40	
V 36 02.08.39	
T53	196
3.72	
V 36 02.09.11	
T53	197
PAL	
4.10	
V 36 02.09.49	
T53	198
4.45	
V 36 02.10.24	
T53	199
4.60	
V 38 02.10.39	
T54	200
0.14	
V 38 02.10.52	
T54	201
0.56	
V 38 02.11.32	
T54	202
TRILHA DO KE TREKE	
1.11	
V 30 02.12.24	
T55	203
1.15	
V 30 02.12.29	
T55	204
1.20	
V 30 02.12.35	
T55	205
1.59	
V 30 02.13.22	
T55	206
1.66	
V 21 02.13.30	
T56	207
1.75	
V 21 02.13.46	
T56	208
1.85	
V 21 02.14.03	
T56	209
1.90	
V 21 02.14.11	
T56	210
1.98	
V 21 02.14.25	
T56	211
2.19	
V 21 02.15.01	
T56	212
2.28	
V 22 02.15.16	
T57	213
2.70	
V 22 02.16.25	
T57	214
DESCIDA FORTE	
2.95	
V 22 02.17.06	
T57	215
3.01	
V 22 02.17.16	
T57	216
3.10	
V 22 02.17.31	
T57	217
3.23	
V 22 02.17.52	
T57	218
3.25	
V 22 02.17.55	
T57	219
DESCIDA FORTE	
3.30	
V 22 02.18.03	
T57	220
3.68	
V 22 02.19.05	
T57	221
3.71	
V 22 02.19.10	
T57	222
PROPRIEDA DE BRUNS	
3.79	
N 4' 02.19.23	
T58	223
3.79	
V 40 02.23.23	
T59	224
4.85	
V 40 02.24.59	
T59	225
6.26	
V 40 02.27.06	
T59	226
6.38	
V 40 02.27.17	
T59	227
PROPRIEDA DE GIBINSKI	
7.02	
V 40 02.28.14	
T59	228
7.48	
V 17 02.28.56	
T60	229
7.66	
V 17 02.29.34	
T60	230
7.79	
V 17 02.30.01	
T60	231
LAVOURA	
8.34	
V 35 02.31.58	
T61	232
0.54	
V 35 02.32.53	
T61	233
0.59	
V 35 02.32.58	
T61	234
0.99	
V 35 02.33.39	
T61	235
CUIDADO PAL	
1.28	
V 35 02.34.09	
T61	236
2.35	
V 21 02.35.59	
T62	237
3.28	
V 21 02.38.39	
T62	238
ENTRE N MATO	
3.51	
V 21 02.39.18	
T62	239
3.68	
V 37 02.39.47	
T63	240
3.80	
V 37 02.39.59	
T63	241
MMS	
4.16	
V 37 02.40.34	
T63	242
4.22	
V 37 02.40.40	
T63	243
4.48	
V 37 02.41.05	
T63	244
4.51	
V 37 02.41.08	
T63	245
4.58	
V 37 02.41.15	
T63	246
MMS	
5.22	
V 37 02.42.17	
T63	247
5.28	
V 37 02.42.23	
T63	248
5.57	
V 37 02.42.51	
T63	249
5.66	
V 37 02.43.00	
T63	250
SO PARA MASTER	
SENIOR E OVER	
OUTRAS CATEGORIAS	
KM 6,06 TRECHO 79	
5.76	
N 3' 02.43.10	
T64	251
CD MOTOS E CARROS	
0.00	
V 36 02.46.10	
T65	252
CDD MOTOS	
1.14	
V 36 02.48.04	
T65	253
1.25	
V 36 02.48.15	
T65	254
1.32	
V 36 02.48.22	
T65	255
1.86	
V 21 02.49.16	
T66	256
1.94	
V 21 02.49.29	
T66	257
1.96	
V 21 02.49.33	
T66	258
2.00	
V 21 02.49.40	
T66	259
RICO	
2.48	
V 21 02.51.02	
T66	260
GASS	
2.73	
V 21 02.51.45	
T66	261
MUITO LISOOO	
2.90	
V 21 02.52.14	
T66	262
LISOOO	
2.95	
V 21 02.52.23	
T66	263
DIRECAO BELHAS	
3.11	
V 21 02.52.50	
T66	264
3.15	
V 21 02.52.57	
T66	265
PAL	
3.17	
N 2' 02.53.00	
T67	266
3.17	
V 32 02.55.00	
T68	267
3.24	
V 32 02.55.08	
T68	268
LAGO	
3.42	
V 32 02.55.28	
T68	269
3.66	
V 32 02.55.55	
T68	270
3.88	
V 32 02.56.20	
T68	271
ABELHAS	
3.97	
V 25 02.56.30	
T69	272
NOMATO	
4.00	
V 25 02.56.35	
T69	273
4.40	
V 25 02.57.32	
T69	274
4.47	
V 35 02.57.42	
T70	275
4.75	
V 35 02.58.11	
T70	276
4.87	
V 35 02.58.23	
T70	277
5.13	
V 35 02.58.50	
T70	278
5.31	
V 35 02.59.09	
T70	279
5.50	
V 24 02.59.28	
T71	280
5.90	
V 28 03.00.28	
T72	281
6.68	
V 28 03.02.09	
T72	282
6.87	
V 28 03.02.33	
T72	283
7.08	
V 28 03.03.00	
T72	284

7.28	V 28   03.03.26   T72	285	
7.47	V 18   03.03.50   T73	286	
7.51	V 18   03.03.58   T73	287	
7.60	V 18   03.04.16   T73	288	
7.80	N 3'   03.04.56   T74	289	
7.80	V 30   03.07.56   T73	290	
8.20	V 12   03.08.44   T76	291	
8.24	V 12   03.08.56   T76	292	
8.27	V 12   03.09.05   T76	293	
8.37	V 23   03.09.35   T77	294	
8.72	V 23   03.10.30   T77	295	
9.02	V 32   03.11.17   T78	296	
0.10	V 32   03.11.28   T78	297	
0.22	V 32   03.11.42   T78	298	
0.27	V 32   03.11.47   T78	299	
1.27	V 32   03.13.40   T78	300	
1.76	V 32   03.14.35   T78	301	
2.39	V 32   03.15.46   T78	302	
2.44	V 40   03.15.51   T79	303	
3.11	V 40   03.16.52   T79	304	
4.89	V 40   03.19.32   T79	305	
6.06	V 40   03.21.17   T79	306	
6.72	N 6'   03.22.17   T80	307	
0.00	V 39   03.28.17   T81	308	
0.17	V 39   03.28.32   T81	309	
0.48	V 39   03.29.01   T81	310	
0.77	V 39   03.29.28   T81	311	
1.00	V 15   03.29.49   T82	312	
1.03	V 33   03.29.56   T83	313	
1.25	V 33   03.30.20   T83	314	
2.37	V 33   03.32.22   T83	315	
2.38	V 33   03.32.23   T83	316	
2.57	V 33   03.32.44   T83	317	
3.70	V 33   03.34.47   T83	318	
4.41	V 25   03.36.05   T84	319	
4.51	V 25   03.36.19   T84	320	
4.72	V 25   03.36.49   T84	321	
4.78	V 25   03.36.58   T84	322	
5.08	V 25   03.37.41   T84	323	
5.38	V 21   03.38.24   T85	324	
5.65	V 21   03.39.11   T85	325	
6.08	V 21   03.40.24   T85	326	
6.23	V 21   03.40.50   T85	327	
6.42	V 21   03.41.23   T85	328	
6.50	N 3'   03.41.36   T86	329	
0.00	V 34   03.44.36   T87	330	
0.23	V 34   03.45.01   T87	331	
0.96	V 40   03.46.18   T88	332	
1.15	V 40   03.46.35   T88	333	
1.23	V 40   03.46.42   T88	334	
1.32	V 40   03.46.50   T88	335	
1.70	V 40   03.47.25   T88	336	
2.39	V 40   03.48.27   T88	337	
2.47	V 40   03.48.34   T88	338	
2.89	V 40   03.49.12   T88	339	
3.26	V 40   03.49.45   T88	340	
3.49	V 40   03.50.06   T88	341	
3.83	V 40   03.50.36   T88	342	
4.87	V 40   03.52.10   T88	343	
5.26	V 40   03.52.45   T88	344	
6.19	V 40   03.54.09   T88	345	
6.30	V 40   03.54.19   T88	346	
6.51	V 40   03.54.38   T88	347	
6.91	V 40   03.55.14   T88	348	
7.44	V 40   03.56.01   T88	349	
7.61	V 25   03.56.17   T89	350	
7.90	V 25   03.56.58   T89	351	
8.05	N 3'   03.57.20   T90	352	
0.00	V 38   04.00.20   T91	353	
0.19	V 38   04.00.38   T91	354	
0.49	V 38   04.01.06   T91	355	
0.83	V 38   04.01.39   T91	356	
0.94	V 38   04.01.49   T91	357	
1.44	V 38   04.02.36   T91	358	
1.50	V 38   04.02.42   T91	359	
2.06	V 38   04.03.35   T91	360	
2.18	V 38   04.03.46   T91	361	
2.27	V 38   04.03.55   T91	362	
2.29	V 38   04.03.57   T91	363	
2.44	V 38   04.04.11   T91	364	
2.70	V 38   04.04.36   T91	365	
2.80	V 38   04.04.45   T91	366	
2.84	V 38   04.04.49   T91	367	
2.89	V 38   04.04.54   T91	368	
2.94	V 38   04.04.58   T91	369	
3.27	V 38   04.05.30   T91	370	
3.69	V 38   04.06.10   T91	371	
3.84	V 38   04.06.24   T91	372	
3.90	V 38   04.06.29   T91	373	
4.20	N 2'   04.06.58   T92	374	
4.20	D 4'   04.08.58   T93	375	
5.71	D 4'   04.12.28   T93	376	
6.20	N 10'   04.12.58   T94	377	
0.00	V 19   04.22.58   T95	378	
0.17	V 19   04.23.30   T95	379	



	NO PUNUS	
0.41		380
V 19	04.24.16	T95
0.50		381
V 19	04.24.33	T95
	NO MATO	
0.51		382
V 19	04.24.34	T95
0.56		383
V 19	04.24.44	T95
0.58		384
V 31	04.24.48	T96
0.71		385
V 31	04.25.03	T96
1.18		386
V 31	04.25.57	T96
	CDD PAL	
1.22		387
V 36	04.26.02	T97
2.03		388
V 15	04.27.23	T98
	LA GO	
2.28		389
V 15	04.28.23	T98
	CUIDADO PONTE	
2.31		390
V 22	04.28.30	T99
3.21		391
V 32	04.30.58	T100
3.31		392
V 32	04.31.09	T100
3.67		393
V 32	04.31.49	T100
4.02		394
V 32	04.32.29	T100
4.21		395
V 32	04.32.50	T100
	CDD PAL	
4.25		396
N 2'	04.32.55	T101
4.25		397
V 34	04.34.55	T102
4.54		398
V 34	04.35.25	T102
4.58		399
V 34	04.35.29	T102
4.84		400
V 34	04.35.57	T102
5.26		401
V 33	04.36.41	T103
5.51		402
V 33	04.37.09	T104
5.53		403
V 33	04.37.11	T104
5.59		404
V 13	04.37.17	T105
	VALA CUIDADO	
5.77		405
V 13	04.38.07	T105
5.83		406
V 13	04.38.24	T105
5.87		407
V 28	04.38.35	T106
	PEDRAS	
6.69		408
V 12	04.40.20	T107
	VALA	
6.72		409
V 12	04.40.39	T107
	LISOO	
6.76		410
V 12	04.40.41	T107
6.85		411
V 23	04.41.08	T108
7.04		412
V 23	04.41.38	T108
	NEUTRO	
7.32		413
N 3'	04.42.22	T109
0.00		414
V 36	04.45.22	T110
0.55		415
V 36	04.46.17	T110
0.64		416
V 36	04.46.26	T110
0.74		417
V 36	04.46.36	T110
1.13		418
V 36	04.47.15	T110
	CONEXAO	
1.75		419
V 29	04.48.17	T111
	GASS	
1.79		420
V 29	04.48.22	T111
1.90		421
V 29	04.48.36	T111
2.57		422
V 29	04.49.59	T111
2.63		423
V 29	04.50.06	T111
2.93		424
V 29	04.50.43	T111
3.14		425
V 29	04.51.10	T111
3.35		426
V 25	04.51.36	T112
4.69		427
V 25	04.54.49	T112
5.29		428
N 2'	04.56.15	T113
5.29		429
V 42	04.58.15	T114
5.56		430
V 42	04.58.38	T114
5.58		431
V 42	04.58.40	T114
5.70		432
V 42	04.58.50	T114
5.97		433
V 42	04.59.13	T114
6.09		434
V 42	04.59.24	T114
6.12		435
V 42	04.59.26	T114
7.98		436
V 42	05.02.06	T114
8.20		437
V 31	05.02.24	T115
0.00		438
V 31	05.03.27	T115
0.81		439
V 31	05.03.58	T115
1.01		440
V 31	05.04.22	T115
1.20		441
V 31	05.04.44	T115
1.50		442
V 31	05.05.19	T115
1.66		443
V 31	05.05.37	T115
1.73		444
V 31	05.05.45	T115
1.76		445
V 31	05.05.49	T115
1.94		446
V 31	05.06.10	T115
2.25		447
V 31	05.06.46	T115
2.54		448
V 16	05.07.19	T116
2.66		449
V 16	05.07.46	T116
2.72		450
V 10	05.08.00	T117
	MANGUEIRA	
2.77		451
V 10	05.08.18	T117
	CDD CHIFRE	
2.79		452
N 1'	05.08.25	T118
2.79		453
V 30	05.09.25	T119
2.83		454
V 30	05.09.30	T119
3.01		455
V 30	05.09.51	T119
	DESCIDA FORTE	
3.08		456
V 18	05.10.00	T120
3.63		457
V 30	05.11.50	T121
3.97		458
V 27	05.12.31	T122
4.06		459
V 27	05.12.43	T122
4.15		460
V 27	05.12.55	T122
4.66		461
V 30	05.14.03	T123
4.99		462
V 30	05.14.42	T123
5.25		463
V 27	05.15.13	T124
5.33		464
V 27	05.15.24	T124
5.50		465
V 27	05.15.47	T124
	LISOO	
5.99		466
V 12	05.16.52	T125
6.09		467
V 18	05.17.22	T126
	EROS	
6.16		468
V 18	05.17.36	T126
6.53		469
V 18	05.18.50	T126
6.64		470
N 2'	05.19.12	T127
0.00		471
V 27	05.21.12	T128
0.15		472
V 27	05.21.32	T128
2.23		473
V 27	05.26.09	T128
3.31		474
V 27	05.28.33	T128
	LOMBADA	
3.86		475
V 27	05.29.47	T128
	NICIA	
4.01		476
V 27	05.30.07	T129
	VIADUTO	
0.08		477
D 09'	05.30.17	T130

0.21

D 9'

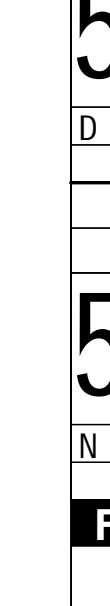
T130



0.38

D 9'

T130



1.05

D 9'

T130

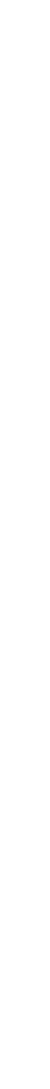


PONTO DE ONIBUS

1.34

D 9'

T130



2.22

D 9'

T130



PARE

2.61

D 9'

T130



SENTIDO BR 153

3.77

D 9'

T130



PARE BR

3.82

D 9'

T130



3.89

D 9'

T130



RADAR

4.04

D 9'

T130



LOMBADA

5.56

D 9'

T130



5.62

D 9'

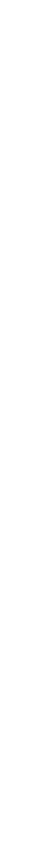
T130



5.68

D 9'

T130



FIMATE 2018

AMERICAN GRILL

5.84

N 1s 05:39:17

T131



FIM DE PROVA !!



www.t15.com.br

Tempo de Prova

CHUVA 05:39:17

FIM